

Asianart.com offers pdf versions of some articles for the convenience of our visitors and readers. These files should be printed for personal use only. Note that when you view the pdf on your computer in Adobe reader, the links to main image pages will be active: if clicked, the linked page will open in your browser if you are online. This article can be viewed online at: <http://asianart.com/articles/10karmapa>

The Sculpture of Chöying Dorjé, Tenth Karmapa

by Ian Alsop

Image Pages

The Sculpture of Chöying Dorjé, Tenth Karmapa

[Last Image](#) | [Back to main article](#) | [Next Image](#)



Fig. 8.1: Male figure seated on a cow/ Avalokiteśvara Chöying Dorjé (1604-1674)
Tibet; 17th century
Copper with traces of gilding and pigments
Height: 16 in. (40.5 cm)
Jokhang/Tsug Lag khang, Inv. no. 893

Inscription: *rje btsun chos dbyings rdo rje'i phyag bzo byin rlabs can. "A spiritually charged [statue] made by the venerable Chöying Dorjé."*

Photograph by Ulrich von Schroeder, 1995
Literature: U. von Schroeder 2001, pp. 750-753, pl. 174A-E; U. von Schroeder 2001, p. 814; and U. von Schroeder 2008, pp. 108-109, pl. 30; and U. von Schroeder 2008, DVD, 108:30

[Click on the image to enlarge](#)

The Sculpture of Chöying Dorjé, Tenth Karmapa

[Previous Image](#)

[Back to main article](#)

[Next Image](#)

Fig. 8.2: Standing male figure

Chöying Dorjé (1604-1674)

Tibet; 17th century

Cast copper with traces of gilding and pigments

Height: 5 5/8 in. (14.3 cm)

Inscription: *rje btsun chos dbyings rdo rje'i phyag bzo. "A work made by the venerable Choying Dorje."*

Collection Heidi and Ulrich von Schroeder

Literature: Sotheby's Indian and Southeast Asian Art, New York, June 17, 1993, lot 4 and U. von Schroeder 2001, p. 755, pls. 175A-D.



[Click on the image to enlarge](#)

The Sculpture of Chöying Dorjé, Tenth Karmapa

[Previous Image](#)

[Back to main article](#)

[Next Image](#)



Fig. 8.3: Standing/crouching male figure with skull-head staff, perhaps Yama
Chöying Dorjé (1604-1674)
Tibet; 17th century
Copper alloy with pigments
Height: 8 1/2 in. (21.5 cm)
Jokhang/Tsug Lhag khang, Inv. no. 169[B]
Inscription: *rje btsun chos dbyings rdo rje'i (phyag bzo) byin riabs can. (some damage to "phyag bzo") "A spiritually charged [statue] made by the venerable Choying Dorje."*

Photograph by Ulrich von Schroeder, 1995
Literature: U. von Schroeder 2001, pp. 756-757, pl. 176A-D; U. von Schroeder 2008, pp. 110-111, pl. 31B; and U. von Schroeder 2008, DVD, pl. 108:31B.

[Click on the image to enlarge](#)



Fig. 8.4: Figure on a cow/ Avalokiteśvara (?)
Chöying Dorjé (1604-1674)
Tibet; 17th century
Copper with cold gold
Height: 8 1/2 in. (21.5 cm)
Jokhang/Tsug Lhag khang, Inv. no. 31

Photograph by Ulrich von Schroeder, 1995
Literature: U. von Schroeder 2001, pp. 766-67, p. 181A-D; U. von Schroeder 2008, pp. 110-111, pl. 31A; and U. von Schroeder 2008, DVD, 108:31A.

[Click on the image to enlarge](#)

The Sculpture of Chöying Dorjé, Tenth Karmapa

[Previous Image](#) | [Back to main article](#) | [Next Image](#)

Fig. 8.5: Figure on a cow/Avalokiteśvara
Chöying Dorjé (1604-1674)
Tibet; 17th century
Cast silver
Height: 7 7/8 in. (20 cm)
Potala Palace Collection, Inv. no. 256

Literature: T.Gyaltzan, ed., *The Potala – Holy Palace in the Snow Land* 1996, p. 81; and U. von Schroeder 2001, pp. 764-765, pl. 180A-D.



[Click on the image to enlarge](#)

The Sculpture of Chöying Dorjé, Tenth Karmapa

[Previous Image](#)

[Back to main article](#)

[Next Image](#)

Fig. 8.6: Goddess/ Sarasvatī
Chöying Dorjé (1604-1674)
Tibet; 17th century
Cast silver
Height: 7 in. (17.8 cm)
Potala Palace Collection, Inv. no. 255

Literature: T.Gyaltsan, ed., *The Potala – Holy Palace in the Snow Land* 1996, p.81; Weldon 2000, Fig. 28, p. 56; and U. von Schroeder 2001, pp.762-763, pl. 179A-D.



[Click on the image to enlarge](#)

The Sculpture of Chöying Dorjé, Tenth Karmapa

[Previous Image](#)

[Back to main article](#)

[Next Image](#)

Fig. 8.7: Standing male figure (Hayagriva?)
Work of Chöying Dorjé (1604-1674) or of his atelier, or a later copy
Tibet; 17th century or later
Copper with cold gold and pigments
Height: 8 1/8 in. (20.5 cm)

Potala Palace Collection, Li ma lha khang, Inv. no. 898
Literature: Shengfang Lianhua, Yixi, Wenwu Chubanshe, Beijing, 2009, p. 35; and U.von Schroeder 2001, pp. 758-759, pl. 177A-D.



[Click on the image to enlarge](#)

The Sculpture of Chöying Dorjé, Tenth Karmapa

[Previous Image](#) | [Back to main article](#) | [Next Image](#)



Fig. 8.8: Seated goddess

Work of Chöying Dorjé (1604-1674) or of his atelier, or a later copy

Tibet; 17th century or later

sMin grol gling Monastery; central

Tibet

Copper with cold gold and pigments

Height: 5 1/8 in. (13 cm)

Photograph courtesy of Honolulu Academy of Arts by

Dasho Tobgye S. Dorji

Literature: U. von Schroeder 2001, pp.760-761, pl. 178A-

C; and T. Bartholomew and J. Johnston, eds., 2008, p.

147.

[Click on the image to enlarge](#)

The Sculpture of Chöying Dorjé, Tenth Karmapa

[Previous Image](#)

[Back to main article](#)

[Next Image](#)

Fig. 8.9: Avalokiteśvara
Chöying Dorjé (1604-1674)
Yunnan Province, China, or Tibet; 17th century
Gilt copper alloy
Height: 6 3/8 in. (6.2 cm)

Private collection

Inscription: *rje btsun chos dbyings rdor'i phyag bzo.* "A work made by the venerable Choying Dorje."



[Click on the image to enlarge](#)

The Sculpture of Chöying Dorjé, Tenth Karmapa

[Previous Image](#) | [Back to main article](#) | [Next Image](#)

Fig. 8.10: Avalokiteśvara (also Fig. 7.34)
Chöying Dorjé (1604-1674)
Yunnan Province, China, or Tibet; 17th century
Gilt copper
Height: 6 1/8 in. (15.5 cm)

Beijing Palace Museum (74895)

Inscription: *rje btsun chos dbyings rdo rje'i phyag bzo. "A work made by the venerable Choying Dorje."*

Literature: Beijing Palace Museum 1996, p. 11; Jin Shen 2002 "Chinese traces reflected on early Tibetan Statues," in Essays on the International Conference on Tibetan Archeology and Art; and ed., Huo Wei, Chengdu: Sichuan Remin Chubanshe, 2004, pp. 230-244, Fig. 8.



[Click on the image to enlarge](#)

The Sculpture of Chöying Dorjé, Tenth Karmapa

[Previous Image](#)

[Back to main article](#)

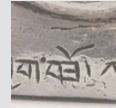
[Next Image](#)

Fig. 8.11: Ninth Karmapa
Chöying Dorjé (1604-1674)
Tibet; 17th century
Silver
Height: 3 1/2 in. (9 cm)

C.C. Lin Collection, Taiwan

Inscription: *ka rma chos dbyings rdor'i phyag bzo. Ka rma pa dbang phyug rdor la na mo.* "A work made by Karma Chöying Dorje. Homage to the (ninth) Karmapa Wangchuk Dorje."

Detail



[Click on the image to enlarge](#)



The Sculpture of Chöying Dorjé, Tenth Karmapa

[Previous Image](#)

[Back to main article](#)

[Next Image](#)

Fig. 8.12:

Left: cow from silver Avalokiteśvara, Potala collection, Lhasa.

Center: cow from an inscribed painting of Marpa, coll. Heidi and Ulrich von Schroeder.

Right: Avalokiteśvara seated on cow, Jokhang, Tibet.

[Click on the image to enlarge](#)



The Sculpture of Chöying Dorjé, Tenth Karmapa

[Previous Image](#) | [Back to main article](#) | [Next Image](#)

Fig. 8.13:
Left: painting of Milarepa, Bordier collection
Right: figure seated on cow, Jopkhang, Lhasa



[Click on the image to enlarge](#)

The Sculpture of Chöying Dorjé, Tenth Karmapa

[Previous Image](#)

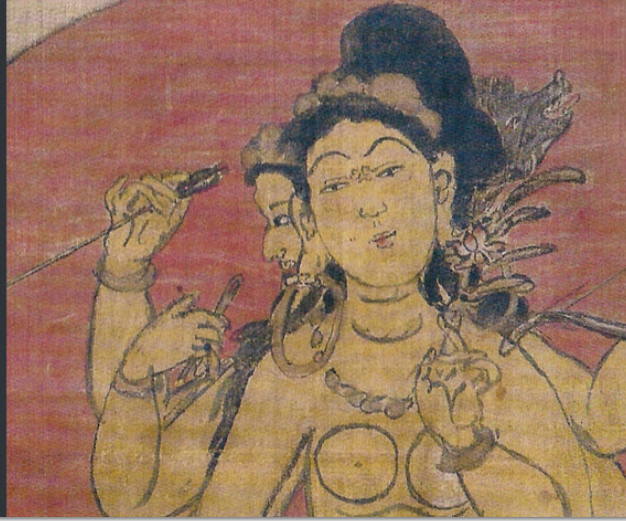
[Back to main article](#)

[Next Image](#)

Fig. 8.14:

Left: Tara, Mindroling

Right: Marici, collection Nabin Kumar



[Click on the image to enlarge](#)

The Sculpture of Chöying Dorjé, Tenth Karmapa

[Previous Image](#) | [Back to main article](#) | [Next Image](#)

Fig. 8.15:

Left: standing figure, Jokhang, Lhasa.

Right: figure from Arhats painting, Alsop collection.

[Click on the image to enlarge](#)



The Sculpture of Chöying Dorjé, Tenth Karmapa

[Previous Image](#)

[Back to main article](#)

[Next Image](#)

Fig. 8.16:

Left: Kneeling devotee figure, Milarepa painting, Bordier collection.

Right: kneeling devotee figure, silver Avalokiteśvara on cow, Potala.

[Click on the image to enlarge](#)



The Sculpture of Chöying Dorjé, Tenth Karmapa

[Previous Image](#)

[Back to main article](#)

[Next Image](#)

Fig. 8.17: Goddess
Chöying Dorjé (1604-1674)
Tibet; 17th century
Cast copper alloy with cold gold and traces of blue, white,
red, and black pigment
Height: 6 1/8 in. (15.5cm)

National Museum of Bhutan, Paro
Photograph courtesy of Honolulu Academy of Arts by
Shuzo Uemoto
Literature: Bartholomew and Johnston, eds., 2008, p.
147, pl. 1



[Click on the
image to enlarge](#)

The Sculpture of Chöying Dorjé, Tenth Karmapa

[Previous Image](#)

[Back to main article](#)

[Next Image](#)

Fig. 8.18: Vajra pani
Chöying Dorjé (1604-1674)
Tibet; 17th century
Painted clay

Former collection of Namgyal and Veronika Ronge,
Germany
Photograph by N. Ronge, 2003



[Click on the image to enlarge](#)

The Sculpture of Chöying Dorjé, Tenth Karmapa

[Previous Image](#)

[Back to main article](#)

[Next Image](#)

Fig. 8.19: Portrait of a Karmapa
(possibly 10th Karmapa Chöying Dorjé)
Work of Chöying Dorjé (1604-1674) or of his atelier, or
later copy

Tibet; 17th century or later

Cast copper alloy

Height: 5 7/8 in. (15 cm)

Collection of Alan Chen
(HAR 66297)



[Click on the
image to enlarge](#)

The Sculpture of Chöying Dorjé, Tenth Karmapa

[Previous Image](#) | [Back to main article](#) | [Next Image](#)

Fig. 8.20: Bodhisattva, Avalokiteśvara?
Chöying Dorjé (1604-1674)
Tibet; 17th century
Wood
Height: 5 1/8 in. (13 cm)

Collection of Heidi and Ulrich von Schroeder
Literature: U. von Schroeder 2001, p. 805, fig. XII-22.
drawing by Udaya Charan Shrestha, after von Schroeder,
2001, fig. XII-22.



Click on the
image to enlarge

The Sculpture of Chöying Dorjé, Tenth Karmapa

[Previous Image](#)

[Back to main article](#)

[Next Image](#)



Fig. 8.21: Chöying Dorjé (1604–1674)

Tibet; 17th century

White sandalwood

10 1/4 x 3 5/8 in. (26 x 9.3cm)

© Tibet Museum of the Alain Bordier Foundation;
Gruyeres, Switzerland ABS 199

Literature:

von Schroeder, Ulrich. 2010.

Buddhist Sculptures of the Alain Bordier Foundation.
(Hong Kong: Visual Dharma Publications, Ltd., for the
Alain Bordier Foundation); pp. 50-51, pl. 22A.

[Click on the
image to enlarge](#)

The Sculpture of Chöying Dorjé, Tenth Karmapa

[Previous Image](#)

[Back to main article](#)

[Next Image](#)

Fig. 8.22: Major events in the life of Buddha Śakyamuni Chöying Dorjé (1604-1674)
Tibet; 17th century
Ivory
Height: 11 3/8 in. (29 cm); 9 1/2 in. (24 cm) ivory only

Potala Palace Collection, Sa gsum lha khang, Inv. no. 2168

Photograph by Ulrich von Schroeder, 2006

Literature: U. von Schroeder 2008, pp. 114-115, pl. 33A; and U. von Schroeder 2008, DVD, 108:33A.



[Click on the image to enlarge](#)

The Sculpture of Chöying Dorjé, Tenth Karmapa

[Previous Image](#)

[Back to main article](#)

[Next Image](#)

Fig. 8.23: Major Events in the Life of Buddha Śakyamuni Chöying Dorjé (1604-1674)
Tibet; 17th century
Ivory
Height: 9 1/2 in. (24 cm)

Tibetan Museum, Lhasa (previously Nor bu gLing ka collection)

Photograph by Ulrich von Schroeder, 1995

Literature: Chen Xiejun and Wang Qingzheng, eds., 2001, p. 108, pl. 36; U. von Schroeder 2008, pp. 114-115, pl. 33B; and U. von Schroeder 2008, DVD, 108:33B.



[Click on the image to enlarge](#)



The Sculpture of Chöying Dorjé, Tenth Karmapa

[Previous Image](#)

[Back to main article](#)

[Next Image](#)

Fig. 8.24: Seated Avalokiteśvara, Bodhisattva of Infinite Compassion
Chöying Dorjé (1604-1674)
Yunnan Province, China, or Tibet; 17th century
Ivory
Height: 6 3/4 in. (17.2 cm)

Purchase, Louis V. Bell Fund and Dodge Fund, 1972 (1972.123) © The Metropolitan Museum of Art / Art Resource, NY
The Metropolitan Museum of Art, New York, NY, U.S.A.
Literature: U. von Schroeder 2001, p. 803, fig. XII-21.

Detail



Click on the
image to enlarge



The Sculpture of Chöying Dorjé, Tenth Karmapa

[Previous Image](#)

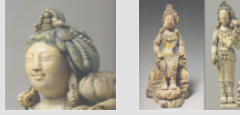
[Back to main article](#)

[Next Image](#)

Fig. 8.25: Avalokiteśvara
Chöying Dorjé (1604-1674)
Yunnan Province, China, or Tibet; 17th century
Ivory
Height: 11 7/16 in. (29.2 cm)

© The Cleveland Museum of Art.
Sundry Purchase Fund, 1968.280
Catalogued as: "Padmapani Lokesvara
China, Southwest, Yunnan, Nan-chao Kingdom, c. 10th
century"
Literature: U. von Schroeder 2001, p. 803, fig. XII-20.

Detail



[Click on the image to enlarge](#)

The Sculpture of Chöying Dorjé, Tenth Karmapa

[Previous Image](#) | [Back to main article](#) | [Next Image](#)



Fig. 8.26: Buddha and Adorants on the Cosmic Mountain
India, Kashmir; 675-725
Bronze with silver and copper inlay
13 ¼ x 9 ½ x 4 ¾ in.
(33.7 x 24.1 x 12.1 cm)

The Norton Simon Foundation, Pasadena CA
F.1972.48.2.S

[Click on the image to enlarge](#)

The Sculpture of Chöying Dorjé, Tenth Karmapa

[Previous Image](#)

[Back to main article](#)

[Next Image](#)

Fig. 8.27: Parvati (Uma) or Shiva
Northern India; 10th century
Metal, silver inlay
Height: 8 7/8 in. (22.5 cm)

Rubin Museum of Art
C2005.16.5 (HAR 65427)



[Click on the image to enlarge](#)

The Sculpture of Chöying Dorjé, Tenth Karmapa

[Previous Image](#)

[Back to main article](#)

[Next Image](#)

Fig. 8.28: Hayagriva Lokeshvara
Kashmir; Utpala dynasty (856-1003)
Bronze with silver and copper inlays and pigment
8 3/8 x 4 7/8 x 3 7/16 in. (21.3 x 12.4 x 8.7 cm)

Saint Louis Art Museum, Gift of J. Lionberger Davis
(256:1955)

Literature: Reedy, K48.



[Click on the image to enlarge](#)

The Sculpture of Chöying Dorjé, Tenth Karmapa

[Previous Image](#)

[Back to main article](#)

[Next Image](#)

Fig. 8.29: Seated Buddha Akshobhya
Indian, Kashmir region, probably Gilgit (present-day Pakistan); 8th or 9th century
Copper alloy with copper, silver, and niello inlays and traces of pigment
11 1/2 x 6 x 4 in. (29.21 x 15.24 x 10.16 cm)

Virginia Museum of Fine Arts, Richmond. Arthur and Margaret Glasgow Fund
86.120

Photograph by Katherine Wetzel
© Virginia Museum of Fine Arts
Literature: Reedy, P25.



[Click on the image to enlarge](#)

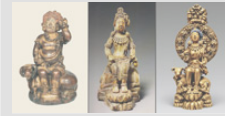
The Sculpture of Chöying Dorjé, Tenth Karmapa

[Previous Image](#) | [Back to main article](#) | [Next Image](#)

Fig. 8.30: Avalokiteśvara seated on a cow
Production of an atelier of Chöying Dorjé (1604-1674) or
a later copy
Yunnan Province, China, or Tibet; 17th century or later
Brass, cast in 4 parts
Height: 11 3/8 in. (28.8 cm)

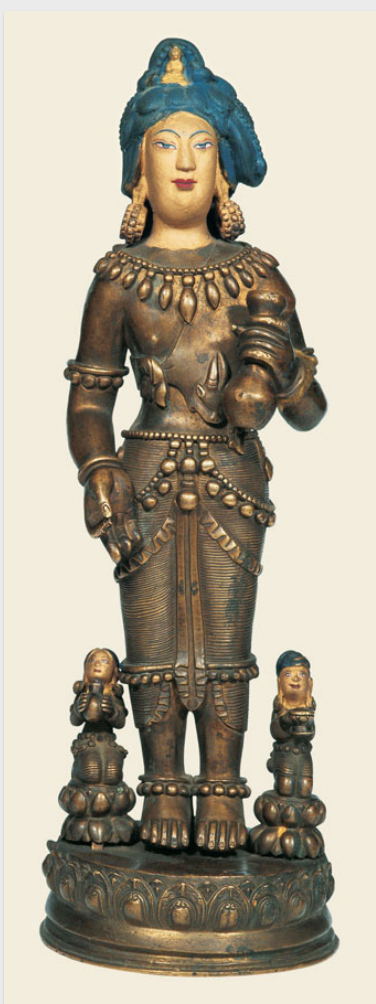
Potala Palace Collection, bLa ma lha khang, Inv. no. 545
Literature: Shengfang Lianhua, Yixi, Wenwu Chubanshe,
Beijing, 2009, p. 111; and U. von Schroeder 2001, pp.
814-815, pl. 192A-E; and U. von Schroeder 2008, pp.
112-113, pl. 32A.

Detail



[Click on the
image to enlarge](#)





The Sculpture of Chöying Dorjé, Tenth Karmapa

[Previous Image](#)

[Back to main article](#)

[Next Image](#)

Fig. 8.31: Standing Avalokiteśvara

Production of an atelier of Chöying Dorjé (1604-1674) or a later copy

Yunnan Province, China, or Tibet; 17th century or later
Brass, cast in four parts

Height: 12 1/4 in. (31 cm)

Jo khang/Lhasa gTsug lha khang, Inv. no. 288

Photograph by Ulrich von Schroeder, 1996

Literature: U. von Schroeder 2001, pp. 812-13, pl. 191A-D; U. von Schroeder 2008, pp. 112-113, pl. 32A; and U. von Schroeder 2008, DVD, 108_32B.

Detail



Click on the image to enlarge

The Sculpture of Chöying Dorjé, Tenth Karmapa

[Previous Image](#)

[Back to main article](#)

[Next Image](#)



[Click on the image to enlarge](#)

Fig. 8.32: Tārā/Sarasvatī
Production of an atelier of Chöying Dorjé (1604-1674) or a later copy
Tibet; 17th century or later
Brass alloy
Height: 6 1/2 in. (16.4 cm)

Potala Palace Collection, Blama lha kang, Inv. nos. 1808 and 1809
Literature: Shengfang Lianhua, Yixi, Wenwu Chubanshe, Beijing, 2009, p. 17; and U. von Schroeder, 2001, p. 818, pl. 194A.

The Sculpture of Chöying Dorjé, Tenth Karmapa

[Previous Image](#)

[Back to main article](#)

[Next Image](#)



[Click on the image to enlarge](#)

Fig. 8.33: Tārā/Sarasvatī
Production of an atelier of Chöying Dorjé (1604-1674) or a later copy
Tibet; 17th century or later
Brass alloy
Height: 6 1/8 in. (15.7 cm)

Potala Palace Collection, Blama lha kang, Inv. nos. 1808 and 1809

Literature: Shengfang Lianhua, Yixi, Wenwu Chubanshe, Beijing, 2009, p. 17; and U. von Schroeder, 2001, p. 818, pl. 194B.

The Sculpture of Chöying Dorjé, Tenth Karmapa

[Previous Image](#) | [Back to main article](#) | [Next Image](#)

Fig. 8.34: Tārā/Sarasvatī
Production of an atelier of Chöying Dorjé (1604-1674) or
a later copy
Tibet; 17th century or later
Brass alloy
Height: 3 3/4 in. (9.5 cm)

Berti Aschmann Collection
Museum of Rietberg, Zürich
Photography by Brigitte Kammerer
Literature: H. Uhlig 1995, pp. 140- 141; no. 88; Weldon
2000 fig 21, p.54



[Click on the
image to enlarge](#)

The Sculpture of Chöying Dorjé, Tenth Karmapa

[Previous Image](#)

[Back to main article](#)

[Next Image](#)

Fig. 8.35: Tārā

Production of an atelier of Chöying Dorjé (1604-1674) or a later copy

Yunnan Province, China, or Tibet; 17th century or later

Brass

Height: 7 3/4 in. (19.8 cm)

Rubin Museum of Art C2005.16.3
(HAR 65425)

Detail



[Click on the image to enlarge](#)





The Sculpture of Chöying Dorjé, Tenth Karmapa

[Previous Image](#)

[Back to main article](#)

[Next Image](#)

Fig. 8.36: Avalokiteśvara

Production of an atelier of Chöying Dorjé (1604-1674) or a later copy

Yunnan Province, China, or Tibet;

17th century or later

Brass

Height: Approx. 7 7/8 in. (20 cm)

The State Hermitage Museum, St. Petersburg Inv. no. Y-745

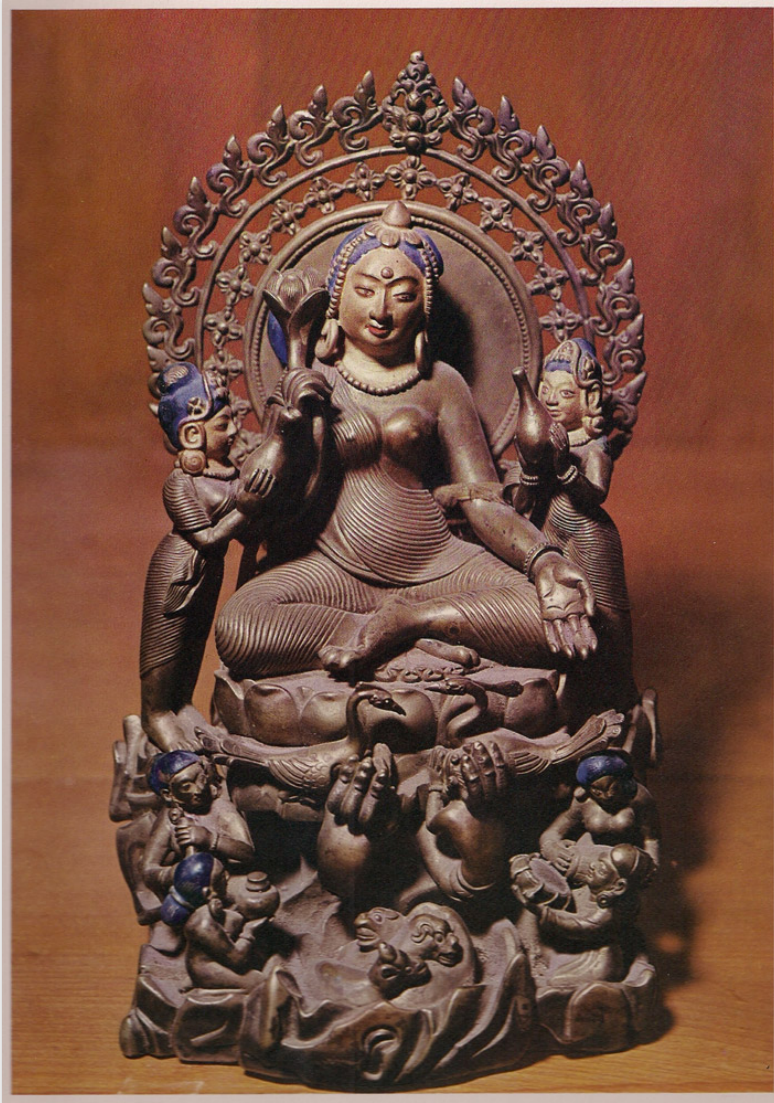
Photograph © The State Hermitage Museum Photograph by Vladimir Terebenin, Leonard Kheifets, and Yuri Molodkovets

Literature: A. Grunwedel 1900; and U. von Schroeder 2001, p. 797, fig. XII-18.

Detail



[Click on the image to enlarge](#)



The Sculpture of Chöying Dorjé, Tenth Karmapa

[Previous Image](#)

[Back to main article](#)

[Next Image](#)

Fig. 8.37: Sarasvati/ Tārā
Production of an atelier of Chöying Dorjé (1604-1674) or
a later copy
Tibet; 17th century or later
Copper alloy

Rumtek Monastery, Sikkim
Literature: M. Singh 1968, p. 20; N. Douglas and M.
White 1976; and U. von Schroeder 2001, p. 799, fig. XII-
19.

Detail



[Click on the
image to enlarge](#)

The Sculpture of Chöying Dorjé, Tenth Karmapa

[Previous Image](#)

[Back to main article](#)

[Next Image](#)

Fig. 8.38A-C: Tārā with retinue
Style of Chöying Dorjé (1604-1674)
Tibet or China (?);
19th century or later (?)
Brass alloy (38A & 38C; silver alloy, 38.b)
Height: Approx. 2 3/8 in. (6 cm)

Hollywood Galleries, Hong Kong

Detail



[Click on the image to enlarge](#)



The Sculpture of Chöying Dorjé, Tenth Karmapa

[Previous Image](#) [Back to main article](#) [Next Image](#)



Fig. 8.39: Tārā with reduced retinue
Style of Chöying Dorjé (1604-1674)
Tibet or China (?); 19th century or later (?)
Brass alloy
Height: approx. 2 3/8 in. (6 cm)

Collection of Alan Chen

[Click on the image to enlarge](#)

The Sculpture of Chöying Dorjé, Tenth Karmapa

[Previous Image](#)

[Back to main article](#)

[Next Image](#)

Fig. 8.40: Tārā with retinue
Style of Chöying Dorjé (1604-1674)
Tibet or China (?); 19th century or later (?)
Brass alloy
Height: approx. 2 3/8 in. (6 cm)

Qin Xuan Collection



[Click on the image to enlarge](#)



The Sculpture of Chöying Dorjé, Tenth Karmapa

[Previous Image](#) | [Back to main article](#) | [Next Image](#)

Fig. 8.41: Tārā with retinue
Style of Chöying Dorjé (1604-1674)
Tibet or China (?); 19th century or later (?)
Brass alloy
Height: approx. 2 3/8 in. (6 cm)

Private collection, Chengdu, Sichuan, China
Photograph by author

[Click on the image to enlarge](#)

The Sculpture of Chöying Dorjé, Tenth Karmapa

[Previous Image](#)

[Back to main article](#)

[Next Image](#)



Fig. 8.42: Tārā with retinue
Style of Chöying Dorjé (1604-1674)
Tibet or China (?); 19th century or later?
Brass alloy
Height: approx. 2 3/8 in. (6 cm)

Private collection, Chengdu, Sichuan, China
Photograph by author

[Click on the image to enlarge](#)

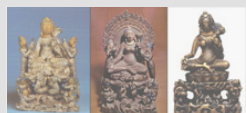
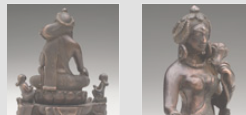
The Sculpture of Chöying Dorjé, Tenth Karmapa

[Previous Image](#) | [Back to main article](#) | [Next Image](#)

Fig. 8.43: Tārā
Style of Chöying Dorjé (1604-1674)
Tibet or China (?); 19th century or later (?)
Brass alloy
Height: approx. 2 3/8 in. (6 cm)

Collection Ian and Lois Alsop
Photograph by James Hart

Detail



[Click on the image to enlarge](#)



The Sculpture of Chöying Dorjé, Tenth Karmapa

[Previous Image](#) | [Back to main article](#) | [Next Image](#)

Fig. 8.44: Vajradhāra
Said to be by Chöying Dorjé (1604-1674)
Tibet; 17th century or later
Rhinoceros horn
Dimensions unknown

Rumtek Monastery, Sikkim
Photograph by Nik Douglas
Literature: N. Douglas and M. White 1976, p. 2.



[Click on the image to enlarge](#)

The Sculpture of Chöying Dorjé, Tenth Karmapa

[Previous Image](#)

[Back to main article](#)

[Next Image](#)

Fig. 8.45: Tilopa

Said to be by Chöying Dorjé (1604-1674)

Tibet; 17th century or later

Rhinoceros horn

Dimensions unknown

Rumtek Monastery, Sikkim

Photograph by Nik Douglas

Literature: N. Douglas and M. White 1976, p. 4.



[Click on the image to enlarge](#)

The Sculpture of Chöying Dorjé, Tenth Karmapa

[Previous Image](#)

[Back to main article](#)

[Next Image](#)

Fig. 8.46: Naropa
Said to be by Chöying Dorjé (1604-1674)
Tibet; 17th century or later
Rhinoceros horn
Dimensions unknown

Rumtek Monastery, Sikkim
Photograph by Nik Douglas
Literature: N. Douglas and M. White 1976, p. 10.



[Click on the image to enlarge](#)

The Sculpture of Chöying Dorjé, Tenth Karmapa

[Previous Image](#)

[Back to main article](#)

[Next Image](#)

Fig. 8.47: Marpa
Said to be by Chöying Dorjé (1604-1674)
Tibet; 17th century or later
Rhinoceros horn
Dimensions unknown

Rumtek Monastery, Sikkim
Photograph by Nik Douglas
Literature: N. Douglas and M. White 1976, p. 14.



[Click on the image to enlarge](#)

The Sculpture of Chöying Dorjé, Tenth Karmapa

[Previous Image](#)

[Back to main article](#)

[Next Image](#)

Fig. 8.48: Milarepa
Said to be by Chöying Dorjé (1604-1674)
Tibet; 17th century or later
Rhinoceros horn
Dimensions unknown

Rumtek Monastery, Sikkim
Photograph by Nik Douglas
Literature: N. Douglas and M. White 1976, p. 18.



[Click on the image to enlarge](#)

The Sculpture of Chöying Dorjé, Tenth Karmapa

[Previous Image](#)

[Back to main article](#)

[First Image](#)

Fig. 8.49: Avalokiteśvara
Chöying Dorjé (1604-1674)
Tibet; 17th century
Cast brass with cold gold
Height: 7 in. (18 cm)

Pritzker Collection

Inscription: *spyan ras gzigs kyi sku rgyal dbang chos dbyings rdo rje'i phyag bzo.*

"Icon of Avalokiteśvara made by Gyalwang ("King of the Victorious Ones") Chöying Dorjé."

Detail



[Click on the image to enlarge](#)